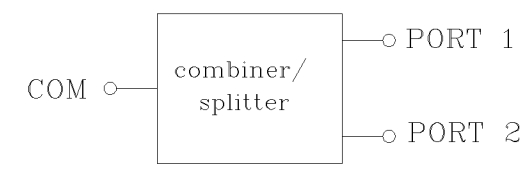
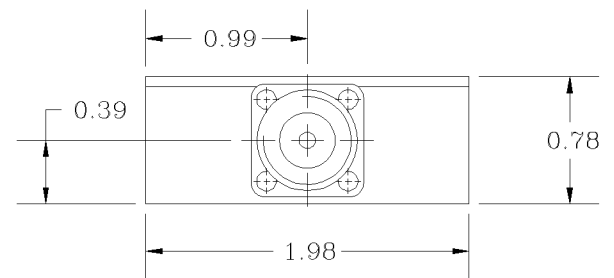
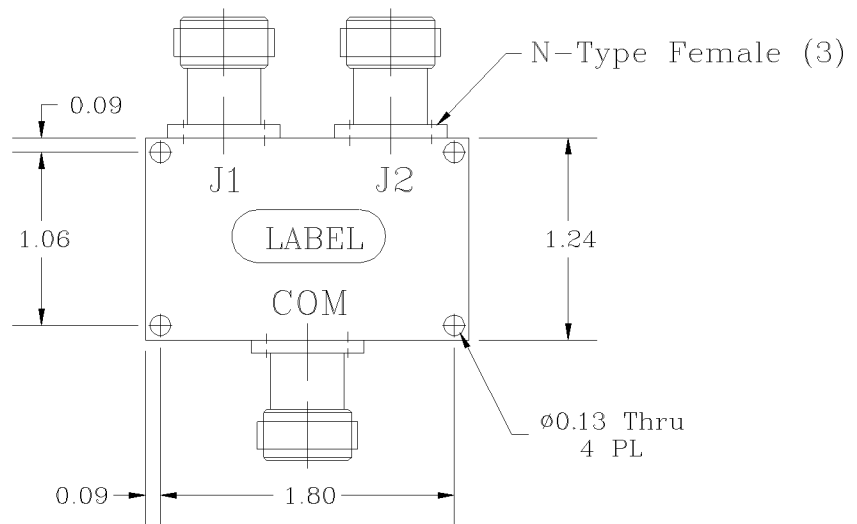
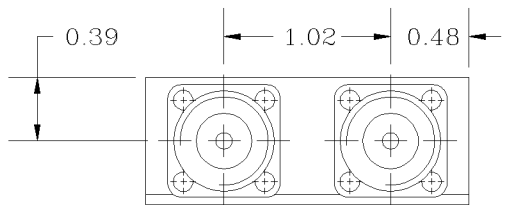


REVISIONS			
REV		DATE	APPROVED
A	Outline changed	06/15	G. David



SKU # 95001795

Electrical Specifications

- *Frequency Range [MHz] : 130 to 174
- *Insertion Loss above 3.0 dB [dB] : < 0.4, 0.3 (Typ.)
- *Amplitude Balance between Ports [dB] : +/-0.25 (Max.)
- *Phase Balance between Ports [degrees] : 90 +/-3.5 (Max.)
- *Isolation between Ports [dB] : 22 (Min.), 25 (Typ.)
- *Pass Band VSWR : < 1.25:1
- *Input/Output Impedance : 50 ohm
- *RF Forward Power Capability CW : 3 Watts
- *Reverse Power Capability CW : 1 Watts

OPERATING TEMPERATURE RANGE: -30°C TO +55°C

PROPRIETARY DOCUMENT:
 THE CONTENTS OF THIS DOCUMENT WITH ALL INFORMATION AND PROCESSES ARE THE SOLE PROPERTY OF G-Way Microwave. THIS DOCUMENT MAY NOT BE DUPLICATED OR DISCLOSED TO ANY PARTY EXCEPT BY EXPRESSLY WRITTEN PERMISSION. THE ONLY AUTHORIZED USE OF THIS DOCUMENT BY A VENDOR IS FOR QUOTE PURPOSES AND SAID VENDOR AGREES NOT TO DISCLOSE ITS CONTENTS TO ANY THIRD PARTY. THIS DOCUMENT IS COPYRIGHTED 1998.

DIMENSIONS ARE IN INCHES		CONTRACT NO:		G-Way Microwave	
TOLERANCES ARE:		APPROVALS			
ANGLES	DECIMALS	DATE		MSI-VHF-B0221	
± 1°	.X ± .05 .XX ± .01 .XXX ± .003	DRAWN Segal 06/15		SIZE	CAGE CODE
TREATMENT	CHECKED	ENG.		DWG NO:	REV.
FINISH	63/	DESIGN ACTIVITY		A	A
MATERIAL	AL6061-T6			SCALE	SHEET
				None	1 OF 1